



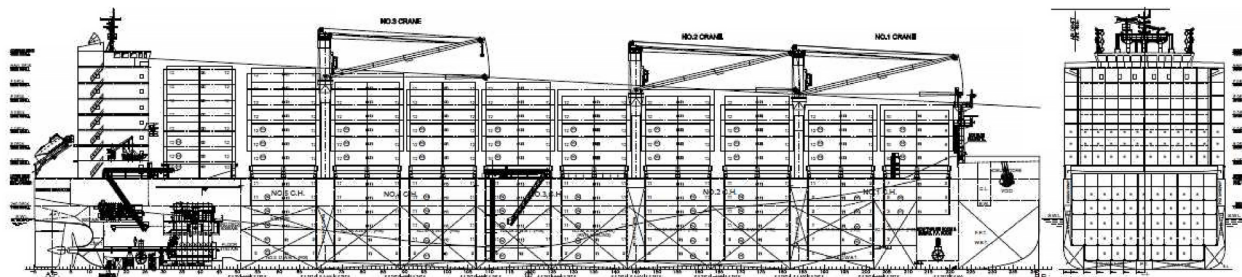
DOUCE FRANCE

2296 TEUS

IMO: 9362334 / Flag: RIF (French)



Shipyard CHINA - Hull YZJ2015-2018
Delivery 22 January 2020



MAIN PARTICULARS

- Length over all.....189.80 m
- Length between pp.....186.50 m
- Breadth.....30.40 m
- Depth to main deck.....17.0 m
- At shallow draft.....6.5 m
- Draught, design.....8.50 m
- Draught, scantling.....9.50 m
- Air Draft.....Abt 49.00 m
- Deadweight @6.5m.....Abt 13 300 Ton
- Deadweight on Td.....Abt 22 000 Ton
- Deadweight on Ts.....not less than 27 429 Ton
- Draught, scantling.....9.35 m
- Lightship.....Abt 10 500 Ton
- Service Speed.....Abt 19.6 knt
(design draught, 90% MCR, 15% power margin)

CLASS

- BV 1 + HULL, + MACH Container Ship, Unrestricted Navigation, + VERISTAR - HULL FAT 25, + AUT, + UMS, Inwater-Survey, Lashing-WW, Monshaft, Cleanship, Green Passport EU, AUT-PORT+ALP, SDS.

TANK CAPACITIES (100%)

- Heavy fuel oil.....Abt 2400 m³
- Marine diesel oil.....Abt 285 m³
- Fresh water.....Abt 200 m³
- Ballast water.....Abt 13000 m³

GEAR

- #1&2&3 : 60t @ 30m
- N°1 & 2 cranes can work in combination

MAIN ENGINE

- WARTSILA (HHI-EMD) Win GD 7 RT-Flex58TE (Tier II)
- MCR.....16 450 kW / 105 RPM
- HFO Spec (ME/Aux.Eng/Boiler)700/700/700 cSt
- Fixed-pitch propeller5 x Blades
- Bow thruster1 x 1300 kW
- Stern thruster1 x 1000 kW

FUEL OIL CONSUMPTION OF MAIN ENGINE

- (L.C.V=10,200kcal/kg)
- D.F.O.C at NCRapprx 58.7 MT/day
- Cruising rangeapprx 18 000 NM

POWER SUPPLY

- Diesel Generators.....4 x 8H25/33 HIMSEN
.....2520 kW @ 900 RPM
- Emergency Generator.....1 x 250 kW @ 1800 RPM

CARGO HATCH COVER

- TypeWeather Steel pontoon type
- Stack weight90MT/20ft & 140MT/40ft, 45ft
- Panel weight.....Max. 40t
(including lashing outfittings)

COMPLEMENT

- Crew of 25 P + 3 Passenger cabins (5 passengers)
+ 6 Suez crew

CONTAINER CAPACITIES

With max. number of Containers
IMO visibility guideline

- On deck (6 tiers).....1314 TEU
- In hold.....982 TEU
- Total.....2296 TEU

- Rows max. in holds/on hatches.....11/12 Rows
- Tiers max. in holds/on hatches.....6/6 Tiers

El. Plugs (for reefer Container)

- On deck.....330 FEU
- In hold.....270 FEU
- Total.....600 FEU

- Heterogenous loading (10 T/TEU).....2296 TEU
- Homogeneous loading (14T/TEU).....Abt 1149 TEU
(based on 8 ft 6 inches, 45% Cont. VCG)

NAVIGATION EQUIPMENT

- Multi purpose ECDIS + 1 conning ECDIS
- 1 Auto Pilot / 2 Gyro compass
- 2 GPS navigator
- 2 echo sounder, 2 speed log
- 2 radar plant with ARPA

TONNAGE

- Gross Tonnage.....26 694 GT
- Net Tonnage.....8 653 GT