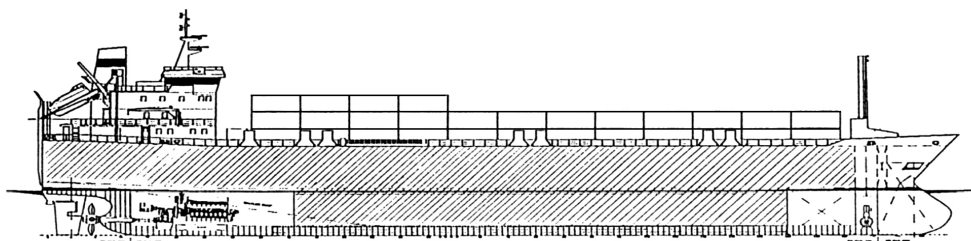




# MARFRET MARIN

RoRo

IMO: 8912376 / Flag: Luxembourg



Hjørungavåg Verksted (Norway) Hull N°49  
Delivery Sept. 1991

## MAIN PARTICULARS

- Length over all ..... 114.4 m
- Length between pp.....104.9 m
- Breadth .....18 m
- Depth to main deck ..... 6.55 m
- Depth to weather deck.....12.4 m
- Draught, summer ..... 6.17 m
- Service Speed ..... 12 knots  
(scantling draught, 90% MCR, 15% power margin)

## CLASS

- BV, + 1A1 General Cargo Carrier RoRo, EO,  
ICE- 1A, PET

## TANK CAPACITIES (100%)

- Heavy fuel oil 180 Cst .....542.5 m<sup>3</sup>
- Marine gas oil.....60 m<sup>3</sup>
- Lubricating oil ..... 26.4 m<sup>3</sup>
- Fresh water ..... 35 m<sup>3</sup>
- Ballast water .....2307 m<sup>3</sup>

## TONNAGE

- GT .....5972
- NT.....1791

## MAIN ENGINE

- WARTSILA VASA 16V32D (4 strokes)  
Total rated power .....5 920 kw  
(at a rated speed of 720 rpm)
- 1 x controlable pitch propeller diameter ..... 4300 mm
- Bow thruster.....1 x 500 kw

## FUEL CONSUMPTION

- Main engine .....1.1 MT/hour  
(HFO 180 Cst at NCR appr at 15.5 kn)
- Auxiliaries (MGO)..... 2 MT/day
- Cruising range appr. .... 7000 M

## POWER SUPPLY

- Shaft Generator ..... 1 x 750 kw
- Diesel Generator.....3 x 340 kw
- Emergency generator.....1 x 95 kw
- Crew ..... 12 persons

## CARRYING CAPACITIES

- Lower Hold (free height 4,3m / design load 5t/m2)  
.....180 lm ~ 15 semi-trailers
- Main deck (free height 5,0m / design load 5t/m2)  
..... 417 lm ~ 36 semi-trailers
- Weather deck (design load 2t/m2).....  
.....370 lm ~ 29 semi-trailers  
or .....143 TEU or 67 FEU
- Stern door ramp .....13.5 m (incl flaps)
- Max load.....60 T (distributed)
- Lifting platform.....19 m x 4.2 m x 3.2 m clear
- Max load..... 60 T
- Ramp cover ..... 46.5 m x 4.4
- Uniform load.....5 T/m
- Reefer plugs
- Weather deck ..... 9
- Main garage ..... 6
- Capacity Accommodation  
for drivers.....6 cabins of 2 persons

## NAVIGATION EQUIPMENT

- 2 Radar Plant with ARPA
- 1 Auto Pilot / 1 Gyro compass
- 1 speed log
- 1 sounders
- 2 GPS
- 1 Inmarsat mini M